

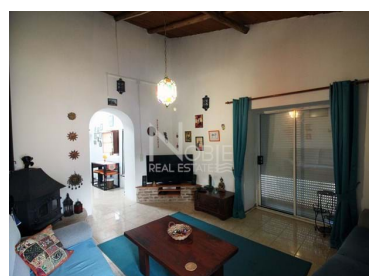


1820

Reference

Scan the QR code to view the property

## Alte - Villa



 2  
Bedrooms

 1  
Bathrooms

 137  
Area (m<sup>2</sup>)

 312  
Land Area (m<sup>2</sup>)

N/A  
(EUR €)

## Two bedroom detached house

Fantastic opportunity to purchase a detached house, with an annex and garden in Cerro.

Cerro is a lovely small village 10 minutes drive to the picturesque town of Alte and 10 minutes drive to Messines where you will find all the big supermarkets and amenities you will need. There is also a small convenience shop and two cafes located approximately 3/4 minutes drive away at Santa Margarida.

The house is 137M2 and comprises of 2 bedrooms a bathroom; kitchen, dining room and large lounge fitted with log burner and patio doors that lead out onto the terrace. The house is perfectly habitable but could be made really special with some modernization. The terrace has the most fantastic views you could ask for totally stunning.

The house is on a plot of 312m you have entrance gates leading to a covered

T +351 918 063 979 <sup>2</sup> · T +351 918 910 437 <sup>2</sup> · E [infnobleproperty@gmail.com](mailto:infnobleproperty@gmail.com)

AMI 15490

<sup>1</sup> (Call to national fixed network) | <sup>2</sup> (Call to national mobile network)

1820

Reference

Scan the QR code to view the property



carport and the outside space wraps around it is a very easy low maintenance garden, you have a sense of a huge garden without the up keep with the fantastic country side situated behind. There is an old Portuguese wood oven, a separate annex, and a shed. The wonderful views are visible from the entire garden. The house has a soak away septic tank for waste and the water goes into a cisterna that is collected from the rain, it can also be filled up from a local tap you just attach your hose and free water, the water comes from reservoirs below the ground.

This house is really good value and located in a very popular area with many different nationalities. Make a viewing today not to miss this great opportunity.

Plot 312m<sup>2</sup>

House 137m<sup>2</sup>

## Property Features

- Fireplace
- Energetic certification: F
- Garden
- Terrace

T +351 918 063 979 <sup>2</sup> · T +351 918 910 437 <sup>2</sup> · E [infonobleproperty@gmail.com](mailto:infonobleproperty@gmail.com)

AMI 15490

<sup>1</sup> (Call to national fixed network) | <sup>2</sup> (Call to national mobile network)